

# How to make a Fabric Face Mask



With

*gratitude*

to our superheroes

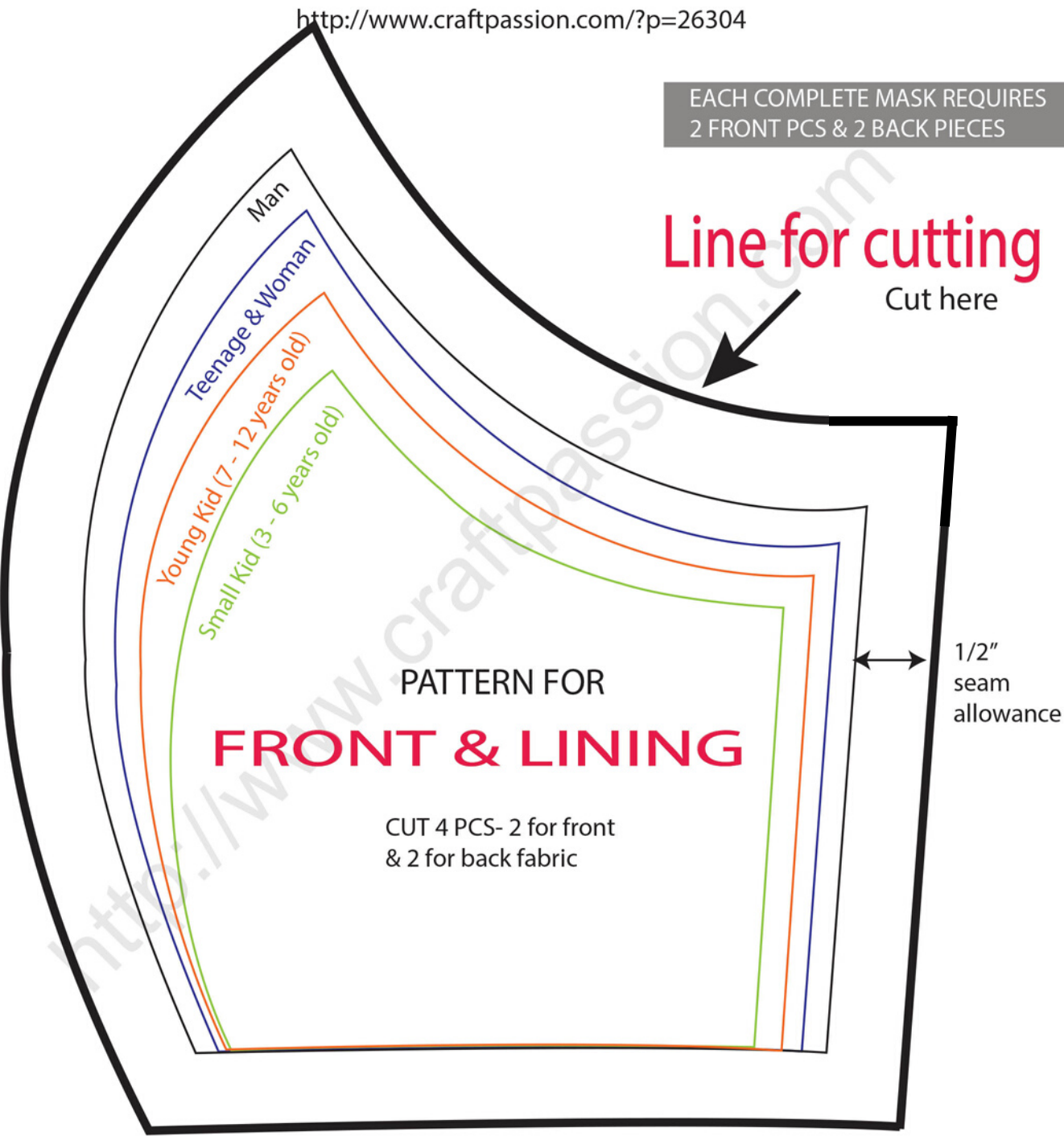


# Print this Pattern

<http://www.craftpassion.com/?p=26304>

EACH COMPLETE MASK REQUIRES  
2 FRONT PCS & 2 BACK PIECES

Line for cutting  
Cut here



2"

IMPORTANT: Please check your scale here after print

We are using the pattern for men's size here.

This is cutting line ( including 1/2" seam )

Note: This pattern has been modified from original to add seam allowance.

Copyright © craftpassion.com  
Meant for hobby and personal use only. Do not sell.



When you print the pattern, make sure you print at 100% scale and not fit to page. Don't worry if the top and bottom text gets cut out as long as your pattern is printed to scale. Check against the line & make sure it measures 2".

(Note: The original pattern has been sourced from [Craft Passion](http://www.craftpassion.com) but we have modified it for our use).

# Cutting the Fabric

Use breathable cotton fabric. Medium-weight fabrics work the best.

Each complete mask requires 2 pieces for the front and 2 pieces for the back.

Draw and cut from the reverse side of the fabric, keeping at least two layers face to face.

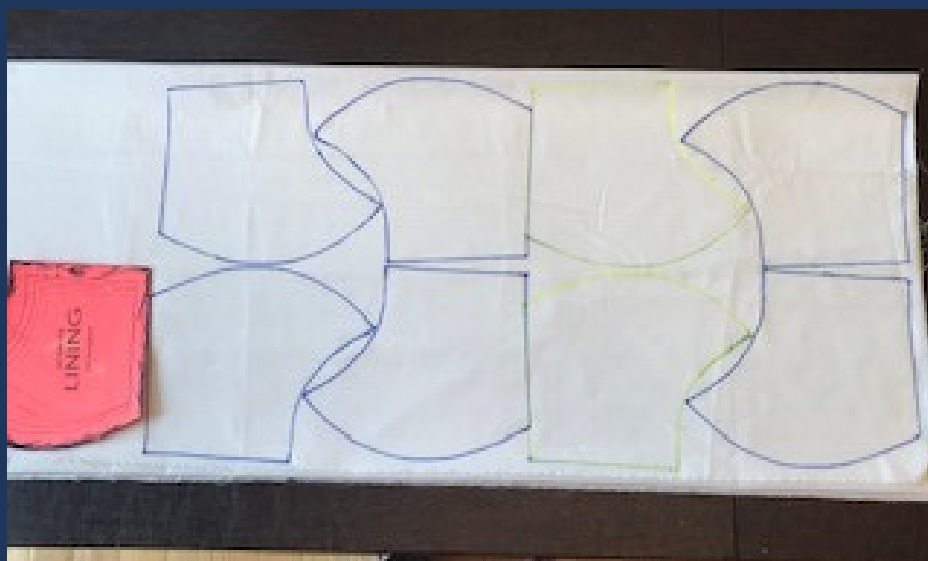
## TIPS

Please use different fabrics for front & back so it is easy to recognize the side that touched the face.

You can cut multiple pieces by folding a fabric or you can lay it out wider and cut if more fabric can be conserved that way.

It is advisable to pin layers together.

NOTE: A seam allowance of 1/2" has already been added to the pattern.



Scroll on for step-by-step stitching instructions with pictures.

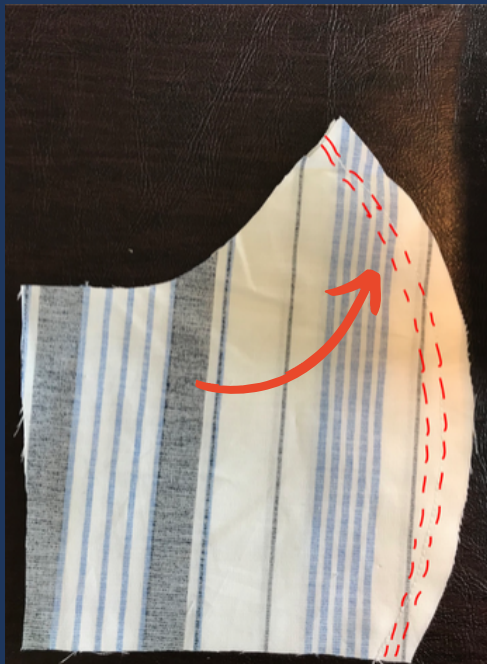
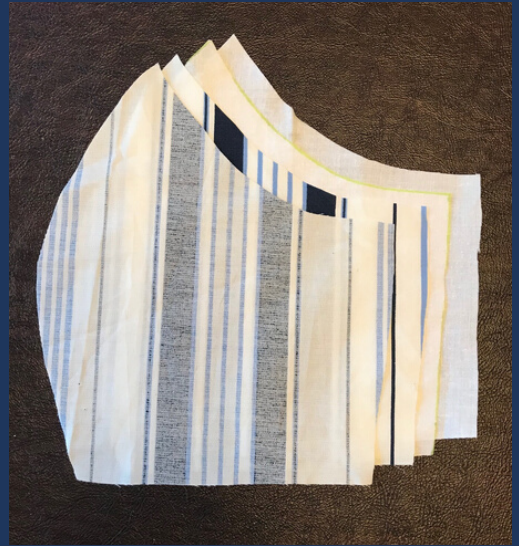
[Click here](#) for a quick video tutorial.



# Sewing the Mask

Start with 4 pieces.  
Two for the front  
and two for the  
back/ lining

STEP  
01

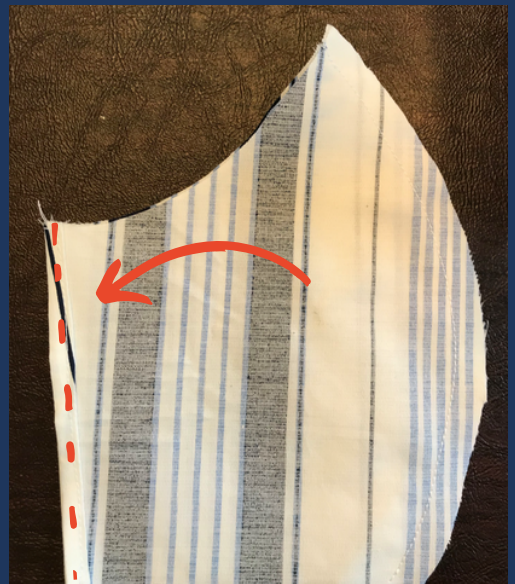


STEP  
02

Take the two front  
pieces with right  
side facing inside  
and do two close  
lines of stitching on  
the curved edge (for  
a stronger seam)  
Remember to stitch 1/2"  
away from edge

Finish both the  
outer edges  
individually, by  
folding 1/4" twice

STEP  
03



Repeat steps 1-3 exactly the same for the lining as well

## STEP 04

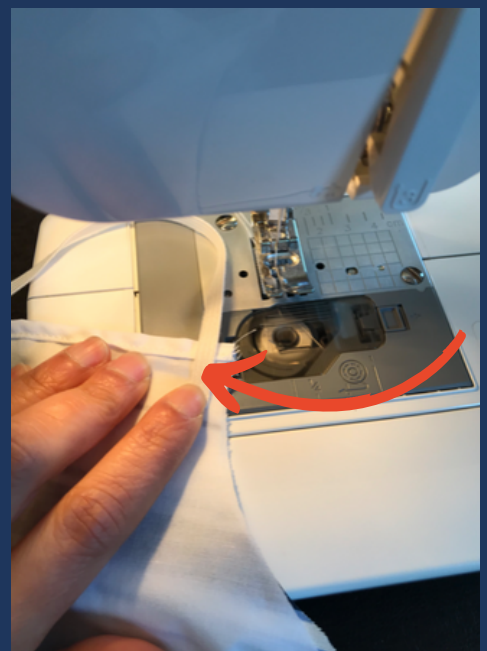


## STEP 05

Now hold the front and lining pieces together by keeping the right side of each inwards and the wrong side outside, matching the edges

Take a 6.5-7.5" piece of elastic and overlap it about 1/2" on edge and start sewing the front & lining together (elastic length based on face size)

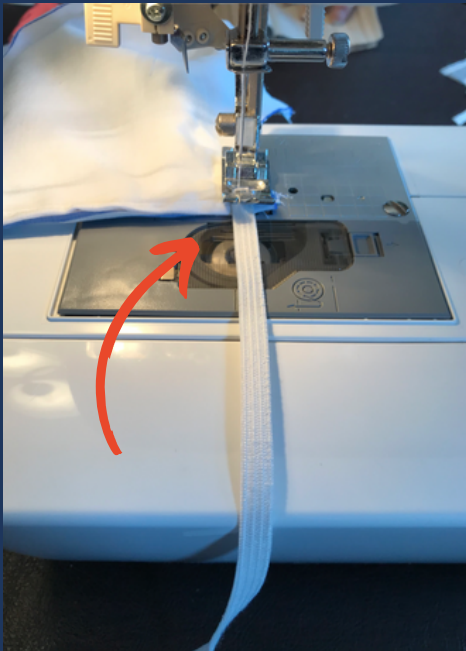
## STEP 06





Attach another 6.5-7.5" elastic before you reach the end of the stitch by overlapping about 1/2" again

STEP  
07



STEP  
08

Attach the other end of the elastics when you finish the bottom edge. This is how a finished mask with elastic will look like from the reverses side

Now, turn the mask inside-out and give an edge stitch at the top and bottom sides to finish the piece

STEP  
09



This is what the final mask should look like.



This mask is open from both ends, where a non-woven insert can be slipped in.

---

# Stay well. Stay Safe.

From your friends in Basking Ridge, New Jersey

See how **KCWL** has rallied our community to volunteer & create thousands of masks for health care providers.